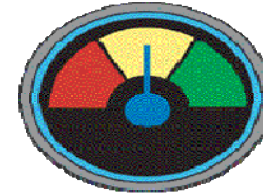


Retention Rate

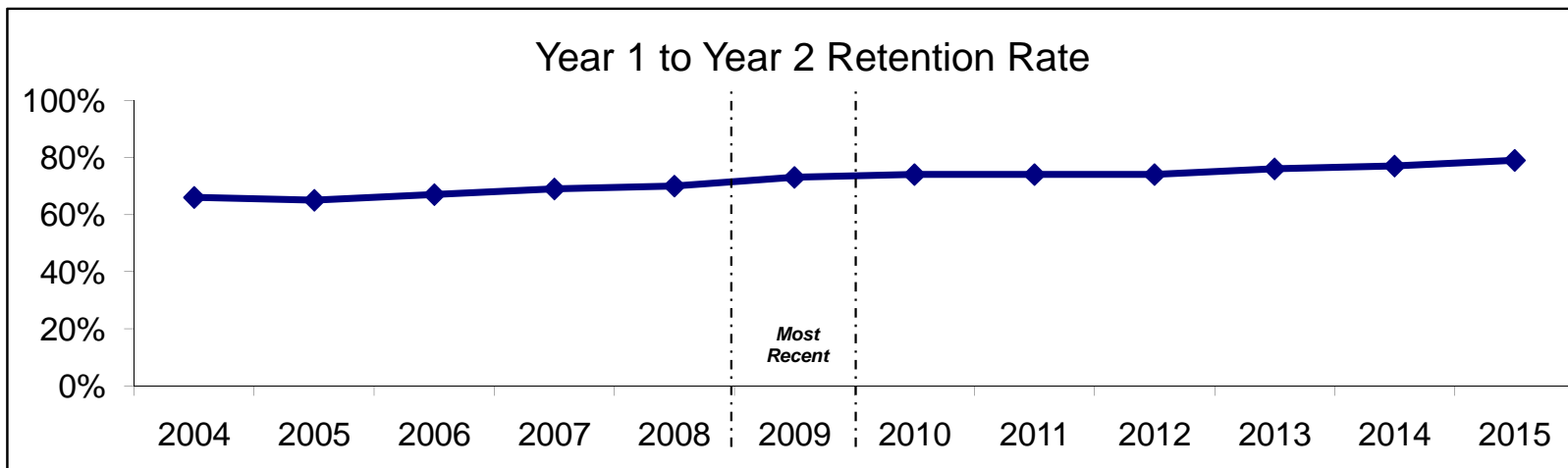
On Target



Definition: The percentage of first-time, full-time undergraduate students entering in the fall term who re-enroll in the following fall term. Measured as of Fall Count Day.

	Previous Values					Most Recent	Projected Values					
	2004	2005	2006	2007	2008	2009	2010	2011	2012	2013	2014	2015
Year 1 to Year 2 Retention Rate	66%	65%	67%	69%	70%	73%	74%	74%	74%	76%	77%	79%

2009 Target = 74%



Data source: Morningside College Fact Book