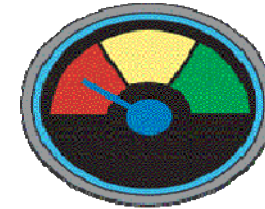


Net Position (Board Discretionary Funds)

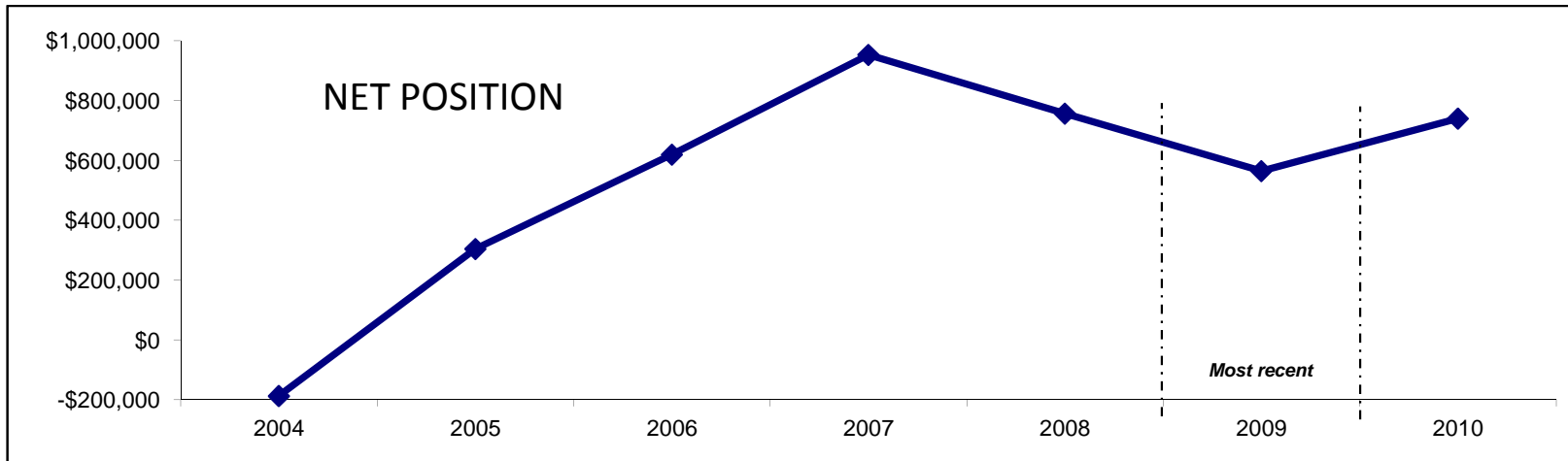
Below Target



Definition: Total revenues minus total expenditures as of May 31.

	Previous Values					Most Recent	Projected Values					
	2004	2005	2006	2007	2008	2009	2010	2011	2012	2013	2014	2015
Net Position	-\$187,074	\$304,483	\$619,449	\$952,876	\$756,773	\$564,343	\$740,000	TBD	TBD	TBD	TBD	TBD

2009 Target = \$778,000



Data source: Office of Business & Finance