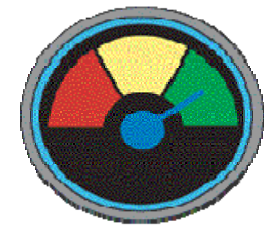


Net Position (Board Discretionary Funds)

Above Target

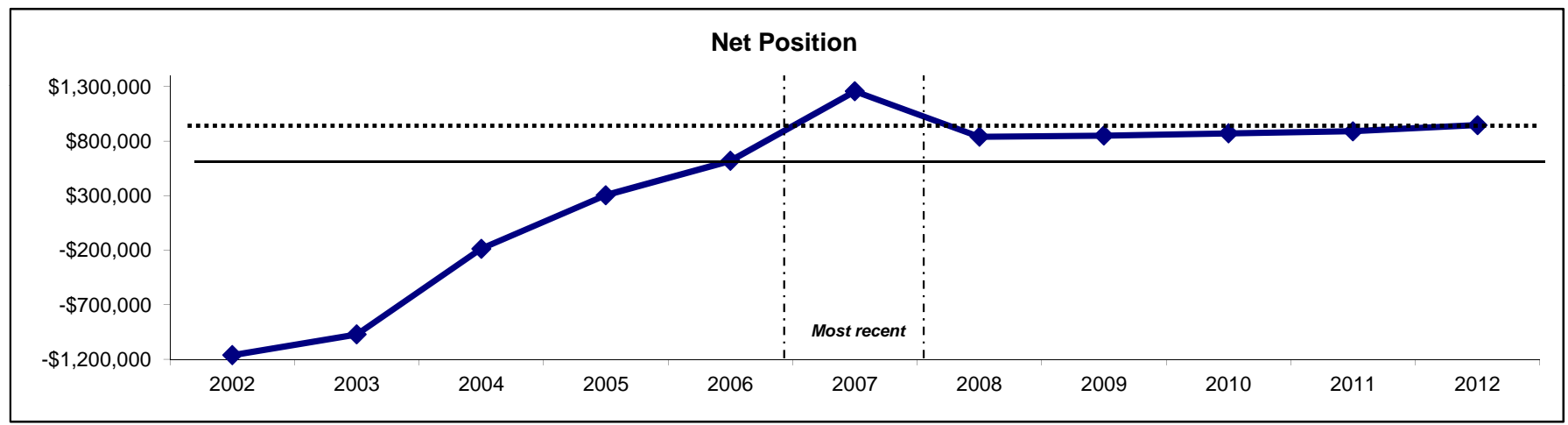


Definition: Total revenues minus total expenditures as of May 31.

	Previous Values					Most Recent 2007	Projected				
	2002	2003	2004	2005	2006		2008	2009	2010	2011	2012
Net Position	-\$1,160,874	-\$971,695	-\$187,074	\$304,483	\$619,449	\$1,255,572	\$840,000	\$850,000	\$871,000	\$890,000	\$946,000

Most Recent Target: \$345,900 to \$356,500

Next Target: \$521,706 to \$537,595



Data source: Office of Business & Finance