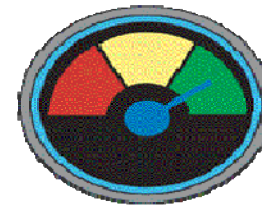


# Four-Year Graduation Rate

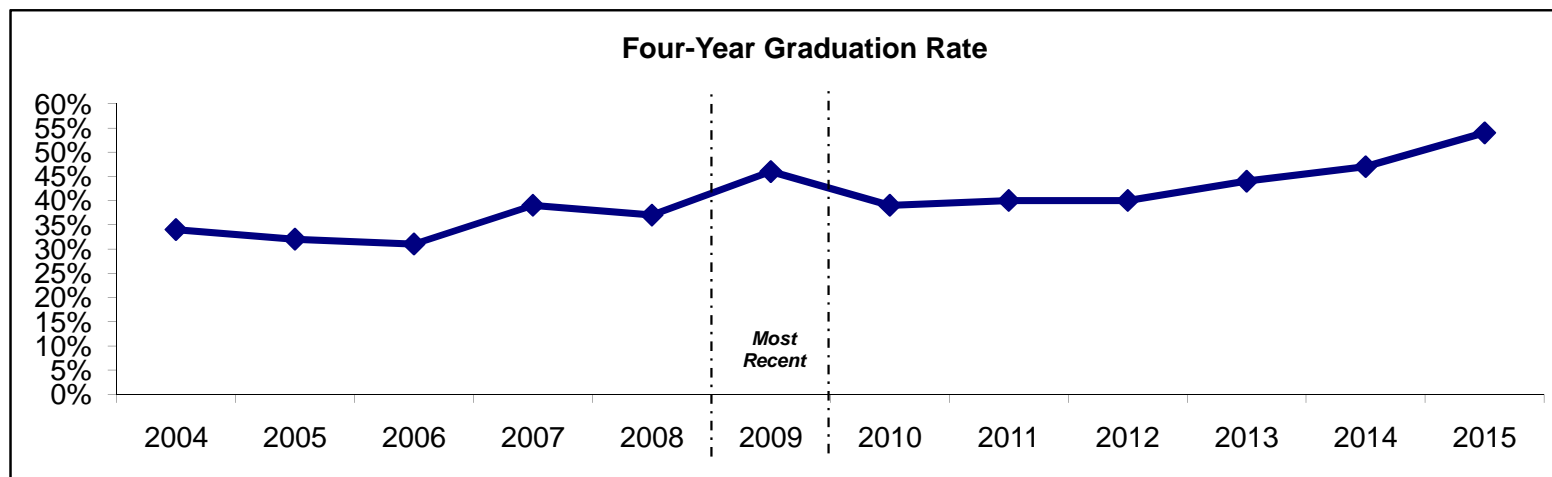
Above Target



**Definition:** The percentage of first-time, full-time undergraduate students entering in the fall term who graduate within four years of entry. Measured as of Fall Count Day.

	Previous Values					Most Recent	Projected Values					
	2004	2005	2006	2007	2008	2009	2010	2011	2012	2013	2014	2015
Four-Year Graduation Rate	34%	32%	31%	39%	37%	46%	39%	40%	40%	44%	47%	54%

2009 Target = 39%



Data source: Morningside College Fact Book