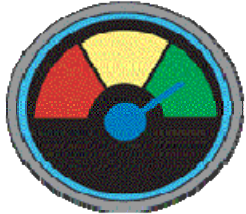


Enrollment

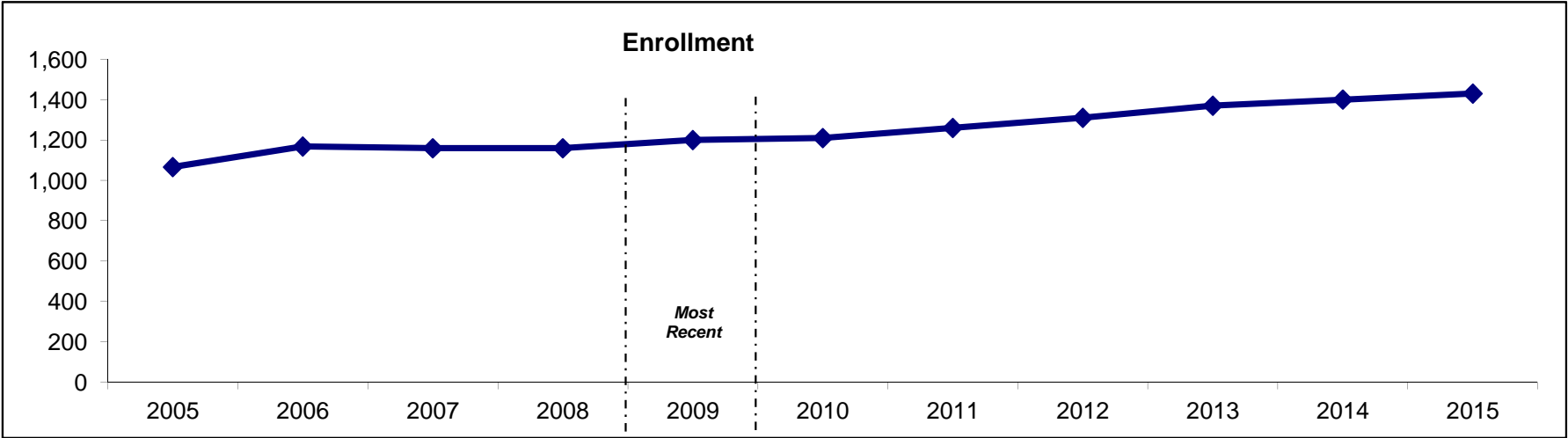
Above Target



Definition: Total number of full-time undergraduate students enrolled. Measured as of Fall Count Day.

	Previous Values				Most Recent	Projected					
	2005	2006	2007	2008	2009	2010	2011	2012	2013	2014	2015
Enrollment	1,066	1,168	1,159	1,159	1,200	1,210	1,260	1,310	1,370	1,400	1,430

2009 Target = 1,180



Data source: Morningside College Fact Book