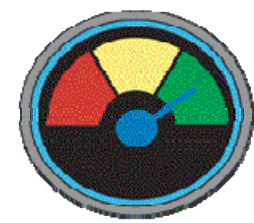


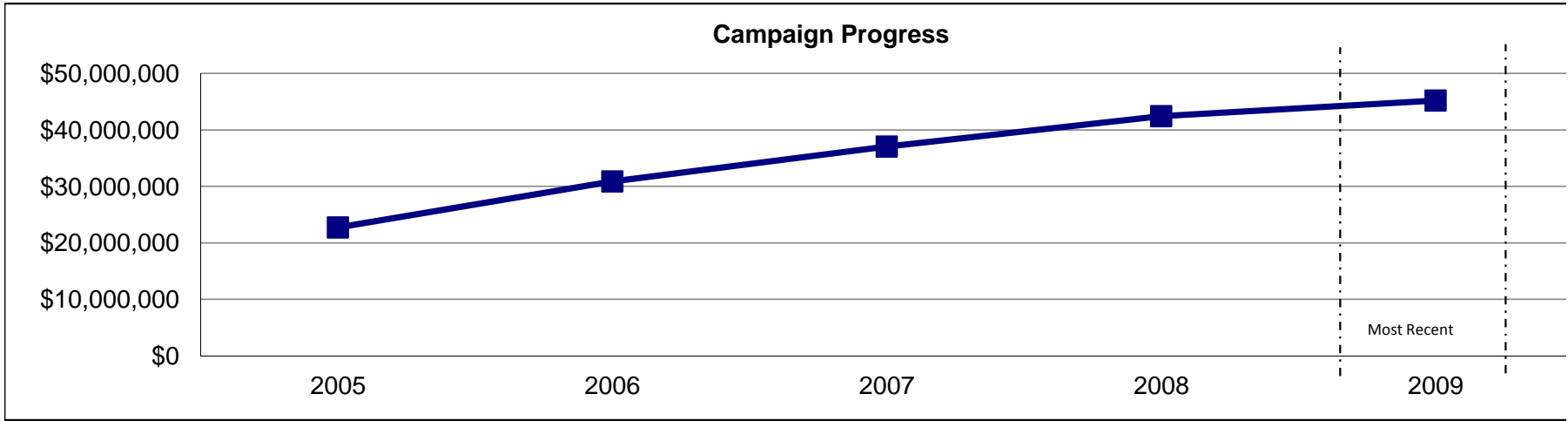
Campaign Progress

Above Target



Definition: Total raised in current campaign as of May 31.

	Previous Values				Most Recent 2009	Campaign Goal	Percent Over Goal
	2005	2006	2007	2008			
Campaign Progress	\$22,732,939	\$30,874,890	\$37,041,296	\$42,417,340	\$45,200,000	\$30,000,000	51%



Data source: Office of Institutional Advancement

