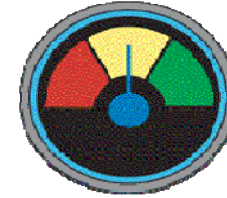


Annual Fund

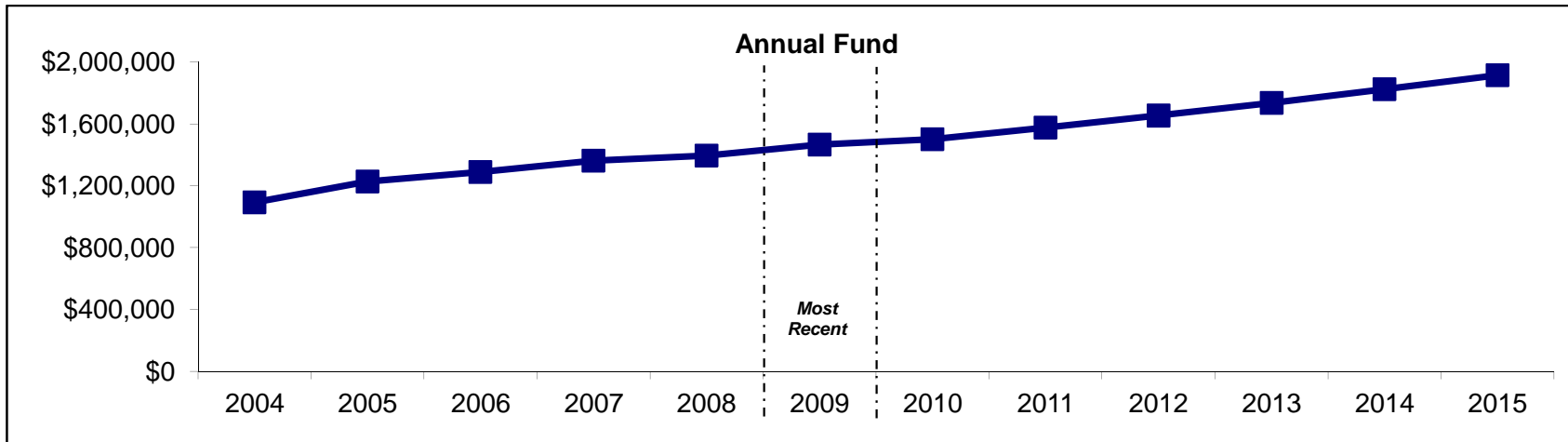
On Target



Definition: Annual fund total as of May 31.

	Previous Values					Most Recent 2009	Projected Values					
	2004	2005	2006	2007	2008		2010	2011	2012	2013	2014	2015
Annual Fund	\$1,092,868	\$1,227,699	\$1,289,150	\$1,362,688	\$1,394,367	\$1,465,771	\$1,500,000	\$1,575,000	\$1,653,750	\$1,736,438	\$1,823,260	\$1,914,423

2009 TARGET = \$1,463,000



Data source: Office of Institutional Advancement

