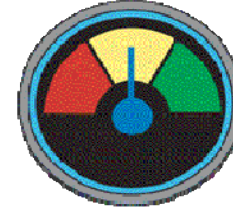


Alumni Giving

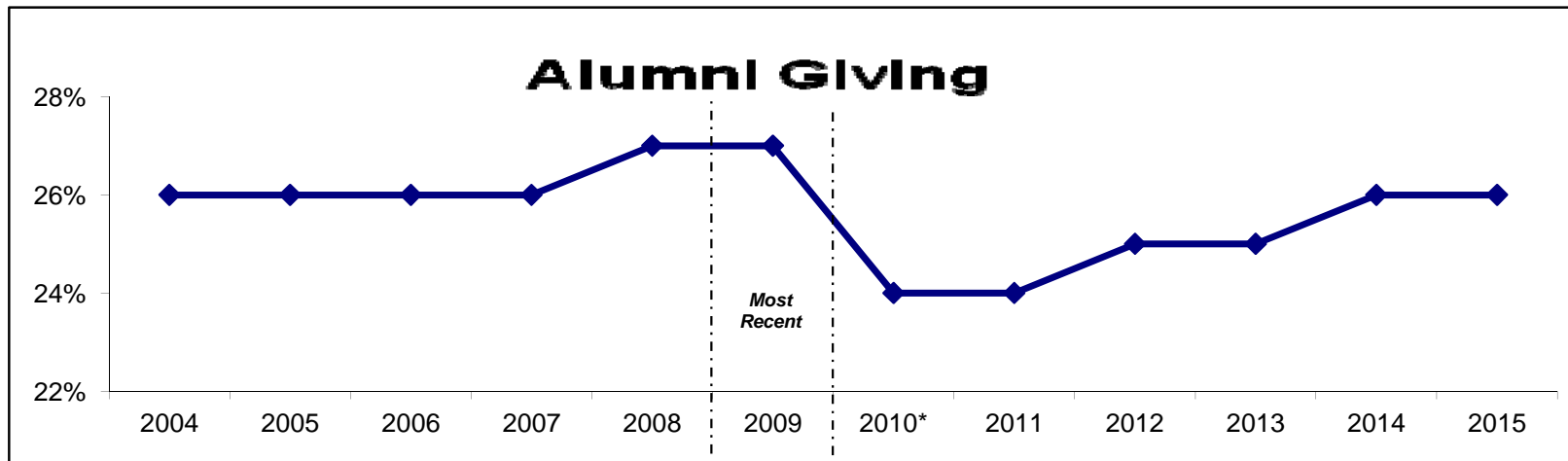
On Target



Definition: Percentage of undergraduate alumni with degrees who give. Measured as of May 31.

	Previous Values					Most Recent 2009	Projected*					
	2004	2005	2006	2007	2008		2010*	2011	2012	2013	2014	2015
% Alumni Giving	26%	26%	26%	26%	27%	27%	24%	24%	25%	25%	26%	26%

2009 TARGET = 28%



Data source: Office of Institutional Advancement

* 2010 begins a new formula for calculating Alumni Gi